

SALVESEN GRAHAM

THE COLLECTION



SALVESEN GRAHAM CHAIR

SGDSCH

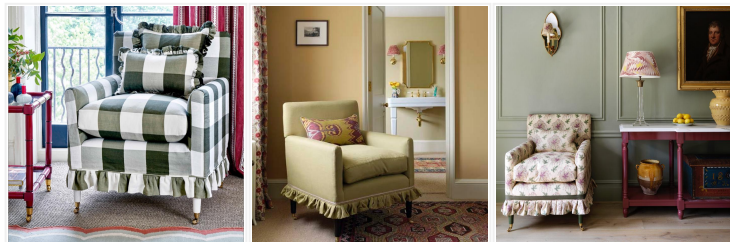
From \$3,912.00

Taking inspiration from the simplicity of Georgian design, our Salvesen Graham Chair features elegant proportions with a sensitivity to design history.

Mary and Nicole wanted to design a chair that was compact but still retaining its elegance; perfect for a London home as well as a country house.

Made by craftspeople in England, each chair is made to order in a choice of Salvesen Graham fabrics or customers own material, skirts lengths or an elegant piped edge, and a curation of leg paint colours and timeless wood finishes to coordinate with our Salvesen Graham fabrics.

We use a solid beech frame for strength and durability and a feather filled seat cushion for optimum comfort. Slim rounded arms and tapered legs creates a beautiful shape to the chair, ensuring versatility allowing it to suit both a living space or bedroom situation. Our Salvesen Graham chair is designed to be classical and timeless so that it can be enjoyed for many years to come.



Salvesen Graham
Unit 1, One Riverside,
One Eastfields Avenue,
London SW18 1FQ

Tel: +44 207 967 7777 | Email: info@salvesengraham.com

SALVESEN GRAHAM

THE COLLECTION

Dimensions: L70cm x W65cm x H94cm

Lead Time:

Up to 14 weeks if not in stock

Material:

Upholstery Fabric Of Choice, Feather Filled Seat Cushion, Solid Wooden Legs With Finish Of Choice, Brass Castors, Solid Beech Wooden Frame

Production: Handmade

Salvesen Graham
Unit 1, One Riverside,
One Eastfields Avenue,
London SW18 1FQ

Tel: +44 207 967 7777 | Email: info@salvesengraham.com